

VDW METROPOLITAN DISTRICT NOS. 1-3
c/o Pinnacle Consulting Group, Inc.
550 W. Eisenhower Blvd. Loveland, CO 80537
Phone: 970-669-3611 FAX: 970-669-3612
Email: VDWMDadmin@pcgi.com

April 13, 2023

Larimer County
Office of the Clerk and Recorder
200 W. Oak St.
Ft. Collins, CO 80521

Via Online Filing Portal

Larimer County
Office of the Assessor
200 W. Oak Street
Fort Collins, CO 80522-1190

Via Email: overbebc@co.larimer.co.us
cc: fordla@co.larimer.co.us

Division of Local Government
1313 Sherman Street, Room 521
Denver, CO 80203

Via E-Filing Portal
VDW Metropolitan District No. 1
(#65132)
VDW Metropolitan District No. 2
(#65133)
VDW Metropolitan District No. 3
(#65134)

Dear Sir or Ma'am:

As required by statute (C.R.S. 32-1-306) and 32-1-104 (3)(b), all Title 32 Article 1 special districts are required to file a current, accurate map of district boundaries with the County Clerk and Recorder, Assessor and Division of Local Government.

On behalf of **VDW Nos. 1-3**, please accept the attached updated District boundary map. The District(s) are wholly located within Larimer County.

If you have any questions or need additional information, please contact me.

Sincerely,





VDW METROPOLITAN DISTRICT NOS. 1-3

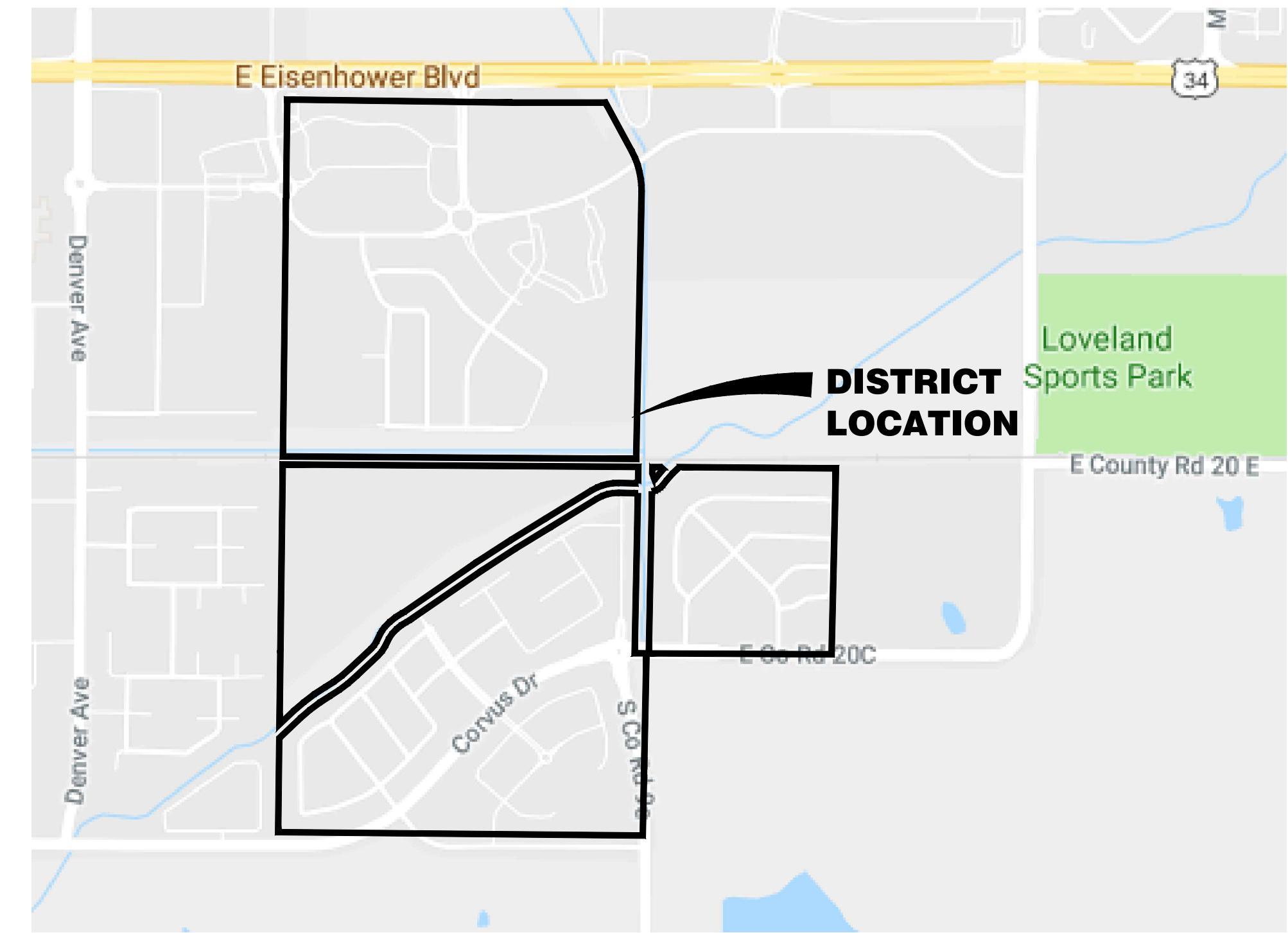
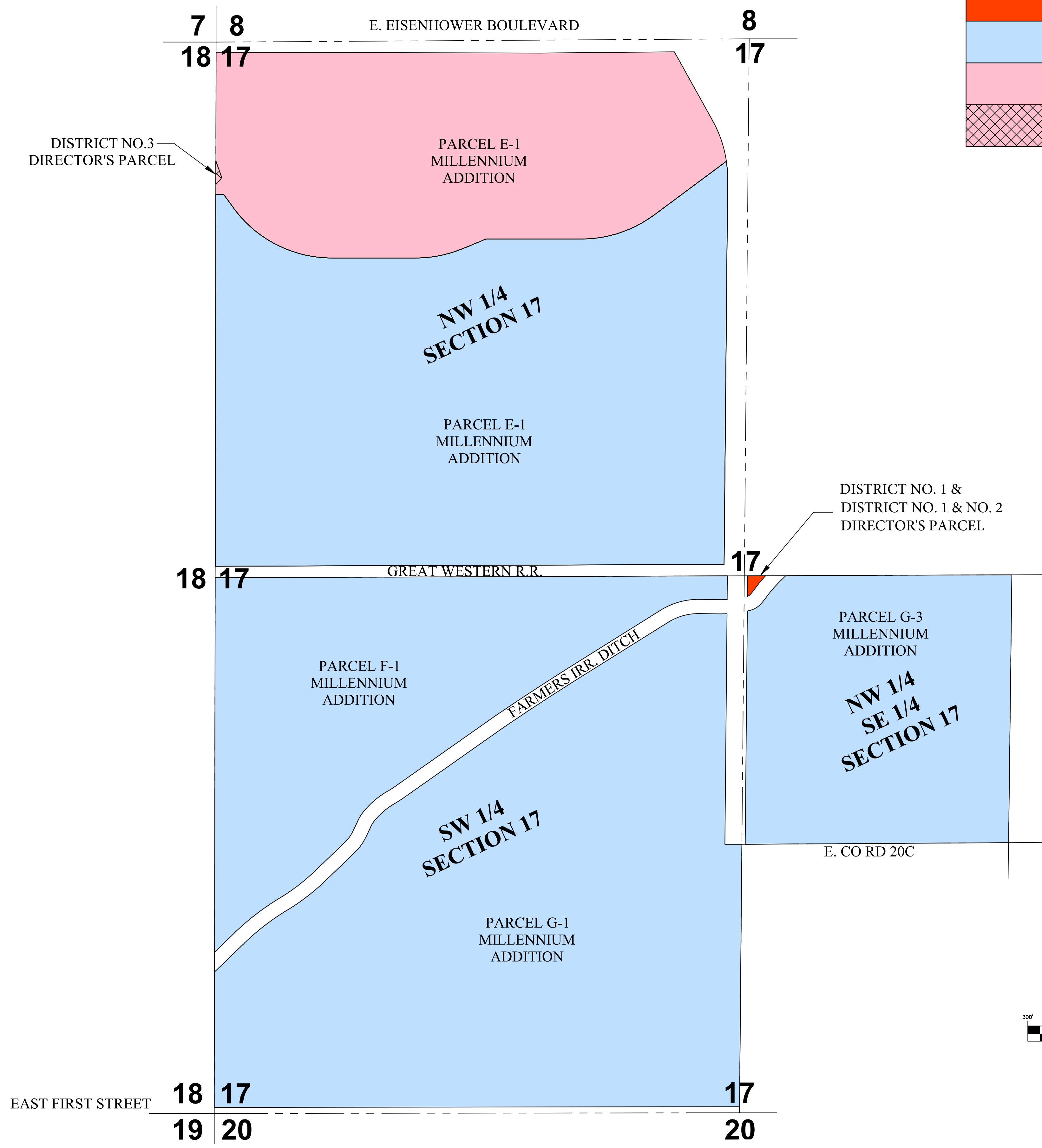
/s/Kieyesia Conaway
District Administrator

VDW METROPOLITAN DISTRICT NOS. 1-3

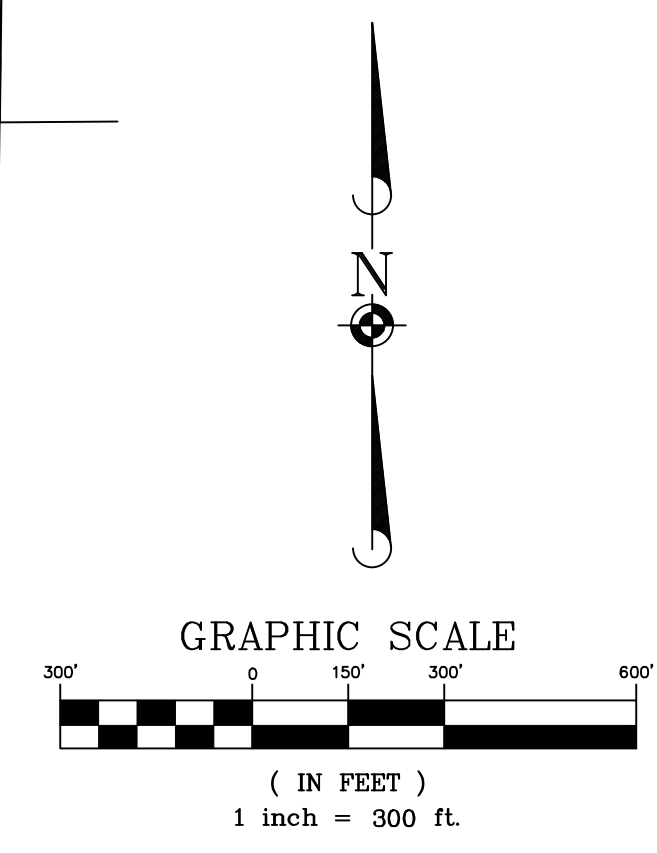
SECTIONS 17, TOWNSHIP 5 NORTH, RANGE 68 WEST, 6TH P.M.
CITY OF LOVELAND, COUNTY OF LARIMER, STATE OF COLORADO

LEGEND/AREA INFORMATION

	VDW METROPOLITAN DISTRICT NO.1 & NO.1/NO.2 DIRECTOR'S PARCEL
	VDW METROPOLITAN DISTRICT NO.2
	VDW METROPOLITAN DISTRICT NO.3
	VDW METROPOLITAN DISTRICT NO.3 DIRECTOR'S PARCEL



VICINITY MAP
(NOT TO SCALE)



VDW METROPOLITAN DISTRICTS 1-3 DISTRICT MAP

April 13, 2023

T:\085\1-20_Survey\120-00215_VDW Metropolitan District-0A.dwg\120-00215_EXHIBIT_VDW.dwg Date: 01/08/22 08:19a ecrason